

75ft Aluminium Landing Craft LCM-8 - 2565



Ocean Marine Brokerage Service | Louisiana
(985) 448-0409 / Fax: (985) 302-0984

Vessel # 2565 / SC

Price: \$365,000.00

Contact: steve@oceanmarine.com

REGISTRATION

YEAR BUILT:	1969
BUILDER:	Marinette, WI for US Government
FLAG:	U.S.
CLASSIFICATION:	None Required
CONSTRUCTION:	Aluminium
GROSS / NET TONS:	110 / 88
CERTIFIED:	No
# OF PASSENGERS:	0
LOADLINE:	None Required

LOCATION

LOCATION:	US Gulf
-----------	---------

DIMENSIONS

LENGTH:	75.0 FT. / 24.61 MT.
BEAM:	21.0 FT. / 6.41 MT.
DRAFT:	2.0 FT. / 0.74 MT.
DRAFT LOADED:	4.5 FT. / 1.48 MT.

REG. LENGTH:	73.7 FT . / 24.18 MT .
EYE LEVEL:	0.0 FT .

CAPACITIES

	Gal.	M Tons	Barrels
FUEL:	860.0	3.0	20.0
POTABLE WATER:	0.0	0.0	0.0
BALLAST:	0.0	0.0	0.0
DECK CAPACITY:	60 tons capacity		

PERFORMANCE

SPEED:	9.0 KTS
CONSUMPTION:	GPH: 0.0 Tons Per Day: 0.0

ACCOMMODATIONS

BERTHS:	0
STATEROOMS:	0

MACHINERY

MAIN ENGINES:	2 GM-12V71
HORSEPOWER:	860
REDUCTION GEAR:	Twin Disc MG-514 RATIO:2:1
PROP:	34" x 24" 2 1/4" Shaft
NOZZLE:	None
GENERATORS:	(1) None - KW:0
BOW THRUSTER:	No / HP: 0
STERN THRUSTER:	No / HP: 0

DECK EQUIPMENT

CRANES:	None
STERN ROLLER:	Bow Ramp
PUSH KNEES:	No
SPUD WELLS:	None
SPUD WINCH:	None

ELECTRONICS

AUTO PILOT:	No
DEPTH FINDER:	No
PLOTTER:	No
EPIRB:	No
GPS:	Yes
RADIO VHF:	Yes
RADIO SSB:	No
RADAR:	Yes

COMMENTS

Used 75ft Aluminium LCM-8 Landing Craft For Sale. Reported in good overall condition. Operational bow ramp. 60 long ton deck capacity

Details pertaining to this vessel are obtained from sources believed to be reliable, however we can not guarantee their accuracy. Buyers should instruct surveyors and agents to investigate details for validity. All offers are subject to prior sale, changes in price and / or inventory, and without notice.

NOTE: See Photos on next page



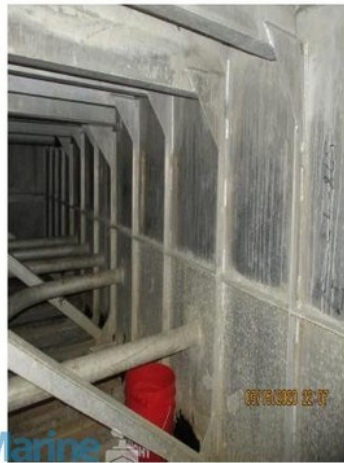
2565sc



2565sc









2565sc

Ocean Marine
Brokerage Services







2565sc

