

# 36ft Fast Patrol-Tow- 16428



Ocean Marine Brokerage Service | Louisiana  
(985) 448-0409 / Fax: (985) 302-0984

**Vessel # 16428 / CR**

**Price: \$45,000.00**

**Contact: [steve@oceanmarine.com](mailto:steve@oceanmarine.com)**

## REGISTRATION

YEAR BUILT:	1976
BUILDER:	Monark
FLAG:	U.S
CLASSIFICATION:	None required
CONSTRUCTION:	Fiberglass
CERTIFIED:	No
# OF PASSENGERS:	6
LOADLINE:	NONE REQUIRED

## LOCATION

LOCATION:	East Coast U.S.
-----------	-----------------

## DIMENSIONS

LENGTH:	36.0 FT. / 11.81 MT.
BEAM:	11.0 FT. / 3.61 MT.
DRAFT:	2.7 FT. / 0.82 MT.
DRAFT LOADED:	0.0 FT. / 0.0 MT.
REG. LENGTH:	0.0 FT. / 0.0 MT.

EYE LEVEL: 0.0 FT.

## CAPACITIES

	Gal.	M Tons	Barrels
FUEL:	220.0	1.0	5.0
POTABLE WATER:	0.0	0.0	0.0
BALLAST:	0.0	0.0	0.0

## PERFORMANCE

SPEED:	15.0 KT S
CONSUMPTION:	GPH: 0.0    Tons Per Day: 0.0

## ACCOMMODATIONS

BERTHS:	0
STATEROOMS:	0

## MACHINERY

MAIN ENGINES:	2 GM-8V53
HORSEPOWER:	300
REDUCTION GEAR:	Twin Disc MG-506 ?    RATIO:2:1
NOZZLE:	No
GENERATORS:	(0) NONE - KW:0
BOW THRUSTER:	No / HP: 0
STERN THRUSTER:	No / HP: 0
BOLLARD PULL:	N/A

## DECK EQUIPMENT

CRANES:	No
STERN ROLLER:	NO

PUSH KNEES:	NO
RAKES:	None
SPUD WELLS:	No
SPUD WINCH:	NO

## ELECTRONICS

AUTO PILOT:	No
DEPTH FINDER:	Yes
PLOTTER:	Garmin
EPIRB:	No
GPS:	Garmin
RADIO VHF:	Yes
RADIO SSB:	No
RADAR:	Garmin

## COMMENTS

36ft Aluminium Patrol - Pilot - Tow Boat For Sale. Cruise 15kts. Built for US Goverment. **Twin Disc Gears?** Basic electronics working? In fair to good overall condition needs a good clean up on interior. Open aft deck with railings. **Aluminum Hatches** on deck. Boat has been sitting idle for some time.

Details pertaining to this vessel are obtained from sources believed to be reliable, however we can not guarantee their accuracy. Buyers should instruct surveyors and agents to investigate details for validity. All offers are subject to prior sale, changes in price and / or inventory, and without notice.

***NOTE: See Photos on next page***





**16428cr**

**OceanMarine**  
Brokerage Services 



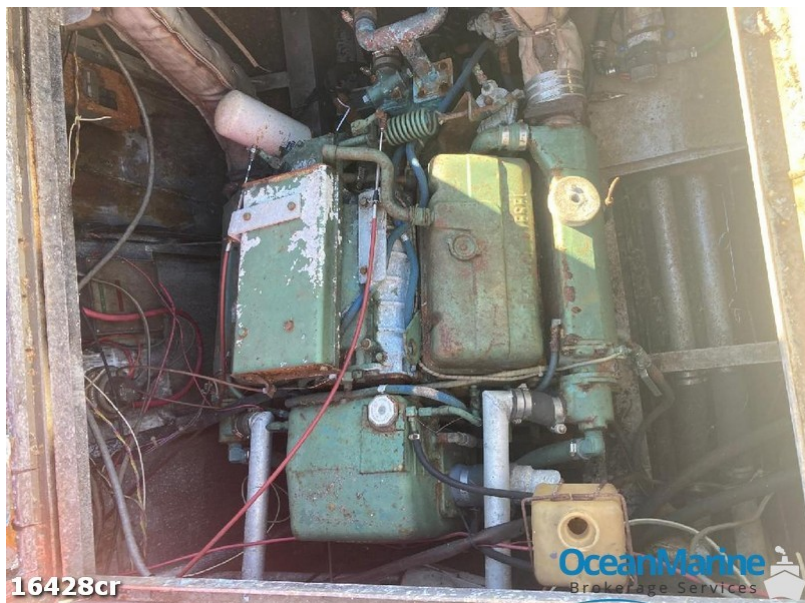




16428cr



16428cr



16428cr









