

240ft Deck Barge - 15589



Ocean Marine Brokerage Service | Louisiana
(985) 448-0409 / Fax: (985) 302-0984

Vessel # 15589 / BG

Price: \$0.00

Contact: steve@oceanmarine.com

REGISTRATION

YEAR BUILT:	1982
BUILDER:	U.S.
FLAG:	U.S.
CLASSIFICATION:	None Required
CONSTRUCTION:	Steel
GROSS / NET TONS:	2253 / 2253
CERTIFIED:	No
# OF PASSENGERS:	0
LOADLINE:	ABS Expired

LOCATION

LOCATION:	U.S. Gulf
-----------	-----------

DIMENSIONS

LENGTH:	240.0 FT. / 78.74 MT.
BEAM:	72.0 FT. / 23.62 MT.
DRAFT:	2.6 FT. / 8.53 MT.
DRAFT LOADED:	12.0 FT. / 3.94 MT.
REG. LENGTH:	230.0 FT. / 75.46 MT.

EYE LEVEL: 0.0 FT.

CAPACITIES

	Gal.	MTons	Barrels
FUEL:	0.0	0.0	0.0
POTABLE WATER:	0.0	0.0	0.0
BALLAST:	0.0	0.0	0.0

PERFORMANCE

SPEED: 0.0 KTS

CONSUMPTION: GPH: 0.0 Tons Per Day: 0.0

ACCOMMODATIONS

BERTHS: 0

STATEROOMS: 0

MACHINERY

MAIN ENGINES: 0 None

HORSEPOWER: 0

REDUCTION GEAR: None RATIO:0

PROP: None

NOZZLE: NO

GENERATORS: (0) None - KW:0

BOW THRUSTER: No / HP: 0

STERN THRUSTER: NO / HP: 0

DECK EQUIPMENT

CRANES: None

STERN ROLLER:	NO
WINCH TYPE:	None
PUSH KNEES:	NO
RAKES:	None
SPUD WELLS:	Yes (2)
SPUD WINCH:	Skagit DMW 150

ELECTRONICS

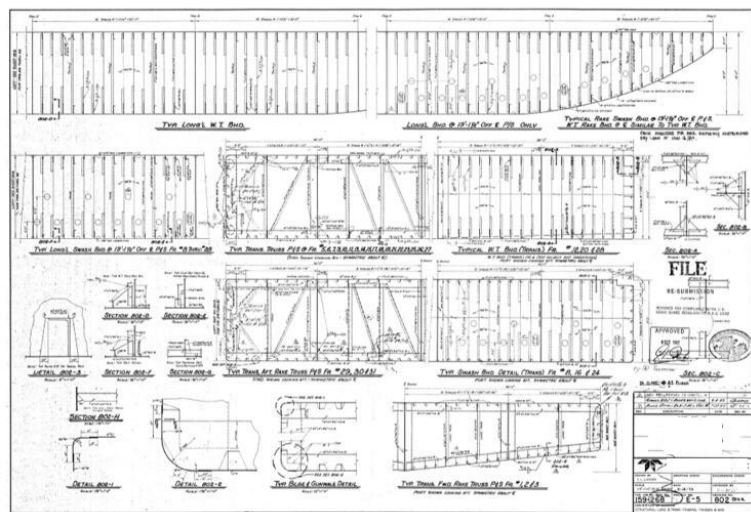
AUTO PILOT:	NO
DEPTH FINDER:	NO
PLOTTER:	NO
EPIRB:	NO
GPS:	NO
RADIO VHF:	NO
RADIO SSB:	NO
RADAR:	NO

COMMENTS

Used 240ft Deck / Spud Barge For Sale. Ex: ABS. (2) Spud wells with (2) 110' x 37.5" spuds. Has coated internals and towing skegs. An added optional feature, a 4-point mooring and anchor system can be installed to secure the barge in lieu of the spud system for higher current or deeper water applications. For this application, two DMW150 Double Drum Winches would be installed fore and aft (below deck). 2 inch cable would be run through fairleads on the bow and stern to secure the anchors or tie off to an existing anchor set and/or buoys.

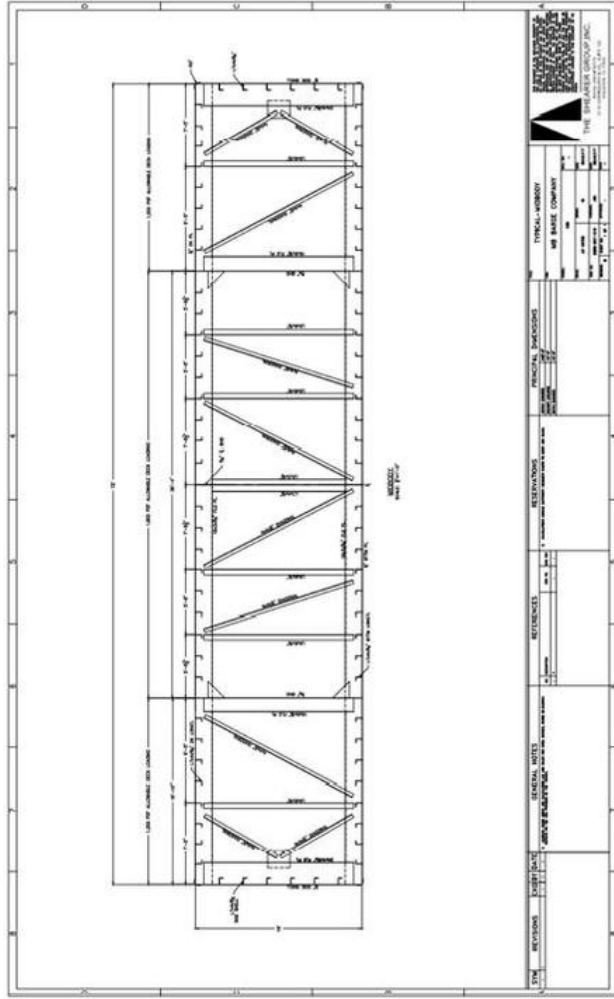
Details pertaining to this vessel are obtained from sources believed to be reliable, however we can not guarantee their accuracy. Buyers should instruct surveyors and agents to investigate details for validity. All offers are subject to prior sale, changes in price and / or inventory, and without notice.

NOTE: See Photos on next page



ABS Drawing (Framing Layout)

Mid-Body Layout (NEW)



GENERAL NOTES 1. REFER TO ALL APPLICABLE SPECIFICATIONS AND DRAWINGS FOR MATERIALS AND CONSTRUCTION DETAILS.		REFERENCES AISC 360-10 STEEL STRUCTURAL DESIGN MANUAL		DESIGNATIONS ALL DIMENSIONS UNLESS OTHERWISE NOTED ARE IN FEET AND INCHES.		PRINCIPAL DESIGNERS NAME: _____ TITLE: _____		TYPICAL MEMBER SEE TABLE FOR MEMBER SIZES AND WEIGHTS.	
REVOLUTIONS NONE		GENERAL NOTES 2. ALL DIMENSIONS UNLESS OTHERWISE NOTED ARE IN FEET AND INCHES.		DESIGNATIONS ALL DIMENSIONS UNLESS OTHERWISE NOTED ARE IN FEET AND INCHES.		PRINCIPAL DESIGNERS NAME: _____ TITLE: _____		TYPICAL MEMBER SEE TABLE FOR MEMBER SIZES AND WEIGHTS.	
REVOLUTIONS NONE		GENERAL NOTES 3. ALL DIMENSIONS UNLESS OTHERWISE NOTED ARE IN FEET AND INCHES.		DESIGNATIONS ALL DIMENSIONS UNLESS OTHERWISE NOTED ARE IN FEET AND INCHES.		PRINCIPAL DESIGNERS NAME: _____ TITLE: _____		TYPICAL MEMBER SEE TABLE FOR MEMBER SIZES AND WEIGHTS.	
REVOLUTIONS NONE		GENERAL NOTES 4. ALL DIMENSIONS UNLESS OTHERWISE NOTED ARE IN FEET AND INCHES.		DESIGNATIONS ALL DIMENSIONS UNLESS OTHERWISE NOTED ARE IN FEET AND INCHES.		PRINCIPAL DESIGNERS NAME: _____ TITLE: _____		TYPICAL MEMBER SEE TABLE FOR MEMBER SIZES AND WEIGHTS.	