

175ft Fast Supply Vessel(FSV) - 15573cr



Ocean Marine Brokerage Service | Louisiana
(985) 448-0409 / Fax: (985) 302-0984

Vessel # 15573 / CR

Price: \$1,900,000.00

Contact: nick@oceanmarine.com

REGISTRATION

YEAR BUILT:	2000
BUILDER:	Breaux Brothers
FLAG:	U.S.
CLASSIFICATION:	None Required
CONSTRUCTION:	Aluminium
GROSS / NET TONS:	98 / 67
CERTIFIED:	Yes
# OF PASSENGERS:	65
LOADLINE:	ABS Loadline

LOCATION

LOCATION:	US Gulf
-----------	---------

DIMENSIONS

LENGTH:	175.0 FT. / 57.41 MT.
BEAM:	32.0 FT. / 10.5 MT.
DRAFT:	6.0 FT. / 1.83 MT.
DRAFT LOADED:	9.0 FT. / 2.95 MT.

REG. LENGTH:	150.0 FT. / 49.21 MT.
EYE LEVEL:	0.0 FT.

CAPACITIES

	Gal.	MTons	Barrels
FUEL:	20263.0	72.0	482.0
POTABLE WATER:	1066.0	4.0	25.0
BALLAST:	35019.0	125.0	834.0
DECK CAPACITY:	300LT		

PERFORMANCE

SPEED:	29.0 KTS
CONSUMPTION:	GPH: 270.0 Tons Per Day: 20.74

ACCOMMODATIONS

BERTHS:	7
STATEROOMS:	4

MACHINERY

MAIN ENGINES:	3 CAT 3516B Twin Speed
HORSEPOWER:	6000
PROP:	68 x 76"
NOZZLE:	No
GENERATORS:	(2) CAT 3406 - KW:75
BOW THRUSTER:	Retractable Azimuthing / HP: 150
STERN THRUSTER:	No / HP: 0

DECK EQUIPMENT

CRANES:	None
---------	------

STERN ROLLER:	None
WINCH TYPE:	None
PUSH KNEES:	No
RAKES:	None
SPUD WELLS:	None
SPUD WINCH:	None

ELECTRONICS

AUTO PILOT:	Yes
DEPTH FINDER:	Yes
PLOTTER:	No
EPIRB:	406
GPS:	Yes
RADIO VHF:	Yes (2)
RADIO SSB:	SEA
RADAR:	Yes (2)

OTHER EQUIPMENT

AIS,Navtex,Necoder

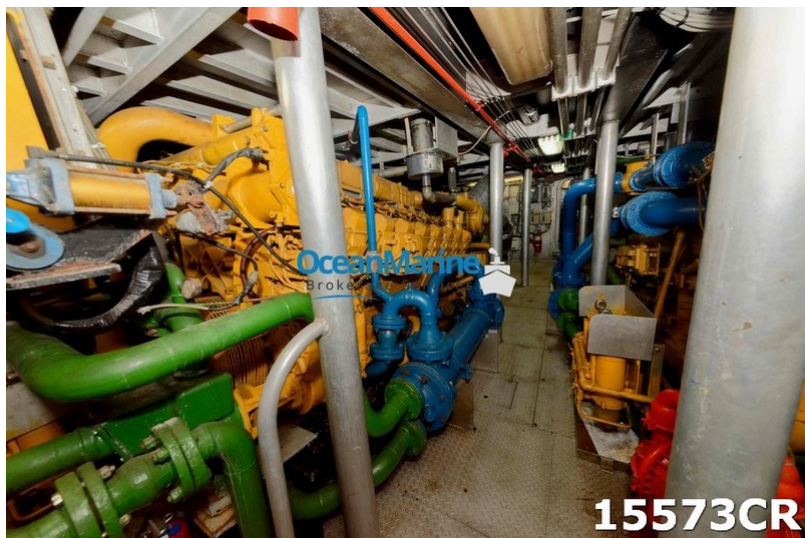
COMMENTS

175ft Crew Fast Supply Vessel (FSV) For Sale. USCG COI. 65 passengers. ABS Loadline.Full electronics. Roll stabilization tanks. 29 kts speed.In excellent condition. Must see to appreciate.

Details pertaining to this vessel are obtained from sources believed to be reliable, however we can not guarantee their accuracy. Buyers should instruct surveyors and agents to investigate details for validity. All offers are subject to prior sale, changes in price and / or inventory, and without notice.

NOTE: See Photos on next page







15573CR